



RAJAMAHENDRAVARAM
MUNICIPAL CORPORATION

RAJAMAHENDRAVARAM MUNICIPAL CORPORATION



e-NewsLetters

Exhibiting Old Movies at Kotilingala Ghat near Jallu Siva statue

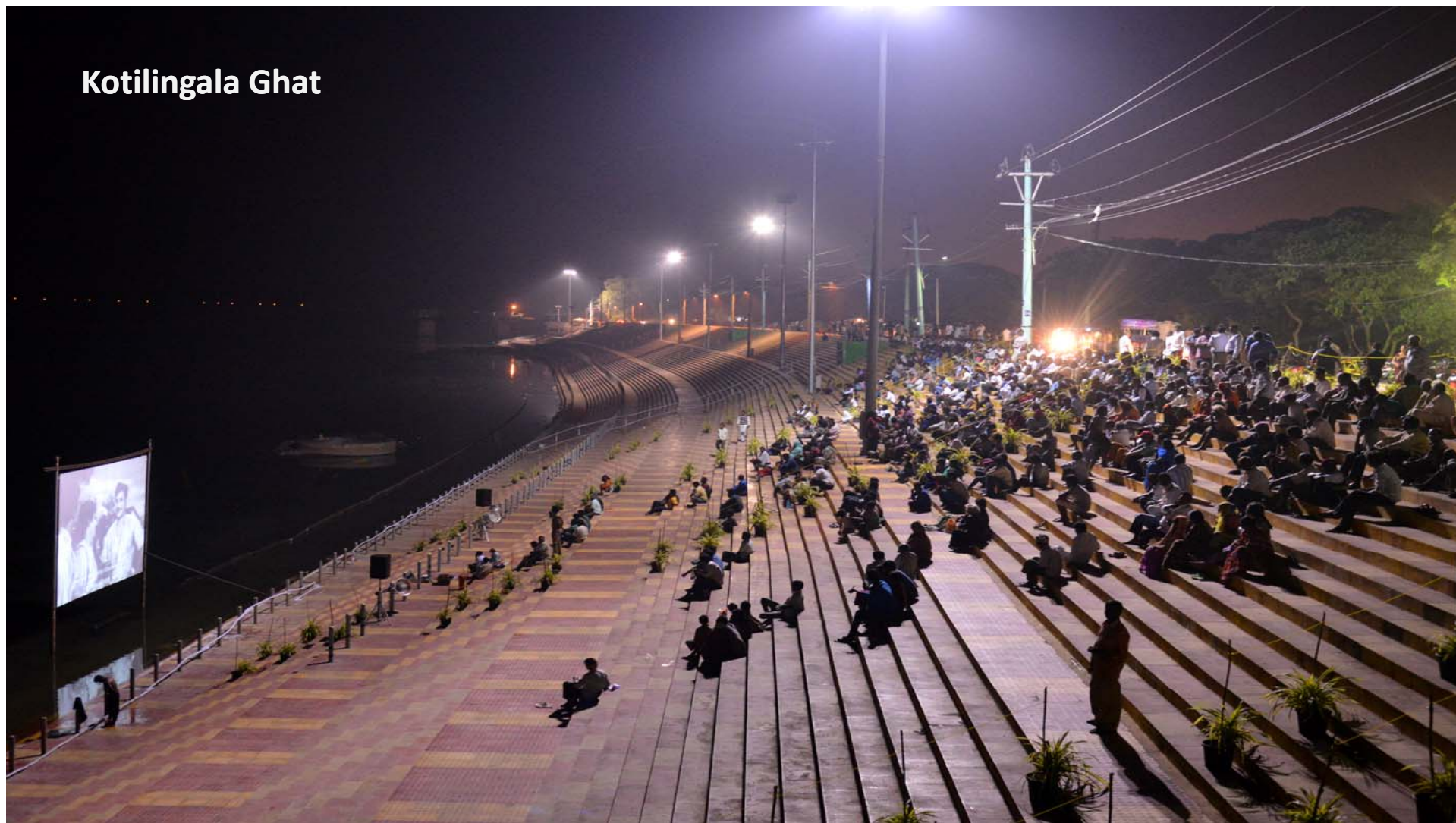
- In this connection, it is submitted that, previously Kotilingala Ghat was existing at far off corner of the City.
- During the Ghat was extended duly merging the Chintamma Ghat, Kanaka Durga Ghat, Lakshmi Ganapathi Ghat, Krishna Chaitanya Ghat etc.
- Now extent of Ghat is 1.20 KMs Irrigation Department has installed Jallu Siva statue at Chintamma Ghat.
- In addition proposals are under preparation to develop greenery along the Ghat to make it a Tourist spot.

- In this connection, it is submitted, that after Godavari Pushkarams, the Ghat is become idle.
- This leads to may illegal activities in the Ghat. To promote the Ghat and to attract the public to this Ghat display of old Black & White movies were proposal.

Out Come :

- This proposal was well appreciated by the public and people enjoyed a lot.

Kotilingala Ghat



Kotilingala Ghat



Removal of unauthorized structures in parking floors

The Rajamahendravaram City is expanding rapidly as it is potential for development in Commercial, Educational, Industrial sectors. The City is well connected with National Highway, Howrah-Chennai main Railway Line and Airport. In the recent years the traffic on the Rajamahendravaram City roads are abnormally increased. So as to avoid traffic congestion and to provide ample parking space, the Rajamahendravaram Municipal Corporation has taken up removal of encroachments in the road margins and constructions made in the Stilt / Cellar Floors intended for Parking. The owners of the buildings though they have objected initially, but coming forward for removal of unauthorized constructions made in the parking floors. The photographs showing the removal of encroachments and removal of unauthorized structures in parking floors may kindly be perused

Out Come :

By removing the encroachments situated in road margins of important roads such as old GNT Road, Danavaipeta Main Roads, A.V.A. Road, Tilak Road, J.N. Road, Korukonda Road, Railway Station Road etc., the vehicular traffic on these roads are regulated and traffic jams are avoided.

By removing the unauthorized constructions made in the Stilt / Cellar Floors intended for Parking, the visitors coming those complexes are able to park their vehicles in the intended parking places by avoiding parking of vehicles in the road margins

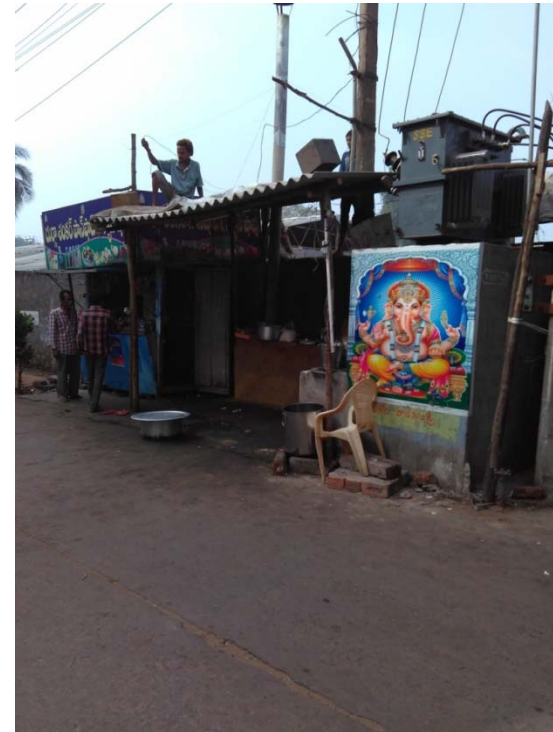
Cellars Removed at Danavaipeta Area



Cellars Removed at Danavaipeta Area



Encroachments removed at Thadithota area



SIDE BERMS PROVIDED WITH INTERLOCKING TILES

It is proposed to provide berm portions of the road from drain to drain wherever necessary for maintaining proper sanitation and to avoid Traffic congestion. It was also directed to extend the berm portions with cement concrete upto drains where they are no service lines like Water supply pipe lines, Cables etc.,

The berms are covered with interlocking tiles over consolidated sand bed where there are water supply pipe line, so that the interlocking tiles can be removed and replaced in position when maintenance works to pipe lines are to be taken up.

The widening of road from drain to drain with interlocking tiles is taken up in Danavaipeta main road and it was proposed to take up in all important major roads.

Interlocking tiles Gandhi Park at Danavaipeta

